



Sandwell News

COVID-19 infection rates are
dangerously high
in our area

Don't leave your home

**unless it's absolutely
essential**

Keep your guard up - stay safe



⚠️ Covid-19 rates remain high in Sandwell, and the new more transmissible variant of Covid-19 accounts for around 80% of our cases. There is a worrying number of cases in people aged 65 and older.

Hospitals are exceptionally busy now.

📌 The most important thing you can do is to take up the offer of the FREE vaccine when you are offered it.

You must stay at home unless it is essential that you go out.

Sandwell has a high proportion of people who can't work from home and we're urging employers to do all they can to protect their staff ❤️

If you go out for essential reasons, remember the message: hands, face, space.

Blue lid bin collections are back!



Blue lid recycling collections will RESTART from next week (1-5 February).


Please put your bins out on your normal bin collection day.

Thank you for your continued support.

Check for updates at www.sandwell.gov.uk/bins



Holocaust Memorial Day

To commemorate Holocaust Memorial Day on Wednesday, [we laid wreaths of daffodils in the memorial gardens at Highfields Register Office, West Bromwich](#) 

Daffodils represent the yellow stars Jews were forced to wear during the Holocaust and symbolise remembrance and resilience.



We also lit up Highfields Register Office and Sandwell Council House purple to pay tribute to all those who have lost their lives through genocide. [The Mayor of Sandwell Councillor Dr Ann Jaron recorded a special video message for the day.](#)


PLEASE SHOP SAFELY



**Do not shop in groups
If possible, don't take children
shopping**



Shop alone if you can and stay safe

 Always wear a face covering in enclosed spaces and shops. This should cover both your nose and mouth at all times.

Supermarkets are places where you are more likely to come into contact with others so please take care.

And remember:

- ↔ Keep at least 2 metres apart
- 👍 Use hand sanitiser
- 🕒 Visit at times when shops are less busy
- 🚫 Don't touch anything you aren't going to buy
- 👤 Shop alone if you can - ideally one person per household
- 💳 Use contactless payments when possible



[We continue to work with the police and are making visits to local shops across Sandwell.](#) If you don't feel safe in a shop, don't go there again.



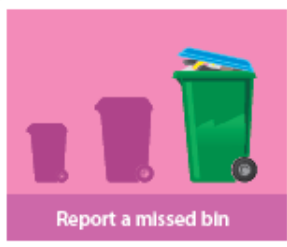
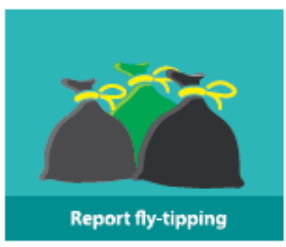
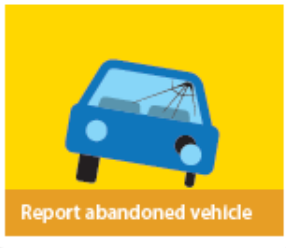
The next Census takes place on 21 March 2021

We use the information it collects to help us plan the services we provide. 🚗 🎓

This includes everything from transport to education.

📄 Census 2021 will be online so you can fill it in at any time and on any device. Paper versions will be available for those who need it. [Find out more about the 2021 Census](#)





my.sandwell.gov.uk